

Cloudpath

Enrollment System

Setting Up Third-Party Authentication Within Cloudpath Using Facebook™

Software Release 5.0
December 2016

Summary: This document describes how to create a Facebook application for use with Cloudpath, and how to configure Cloudpath to use the Facebook application for authentication.

Document Type: Configuration

Audience: Network Administrator



Setting Up Third-Party Authentication Within Cloudpath Using Facebook

Software Release 5.0

December 2016

Copyright © 2016 Ruckus Wireless, Inc. All Rights Reserved.

This document contains Ruckus Wireless confidential and proprietary information. It is not to be copied, disclosed or distributed in any manner, in whole or in part, without express written authorization of a Customer Advocacy representative of Ruckus Wireless, Inc. While the information in this document is believed to be accurate and reliable, except as otherwise expressly agreed to in writing, RUCKUS WIRELESS PROVIDES THIS DOCUMENT "AS IS" WITHOUT WARRANTY OR CONDITION OF ANY KIND, EITHER EXPRESS OR IMPLIED. The information and/or products described in this document are subject to change without notice.

ZoneFlex™, BeamFlex™, MediaFlex™, ChannelFly™, and the Ruckus Wireless logo are trademarks of Ruckus Wireless, Inc. All other brands and product names are trademarks of their respective holders.

Copyright © 2016 Ruckus Wireless, Inc. All rights reserved.

Setting Up Third-Party Authentication Within Cloudpath Using Facebook™

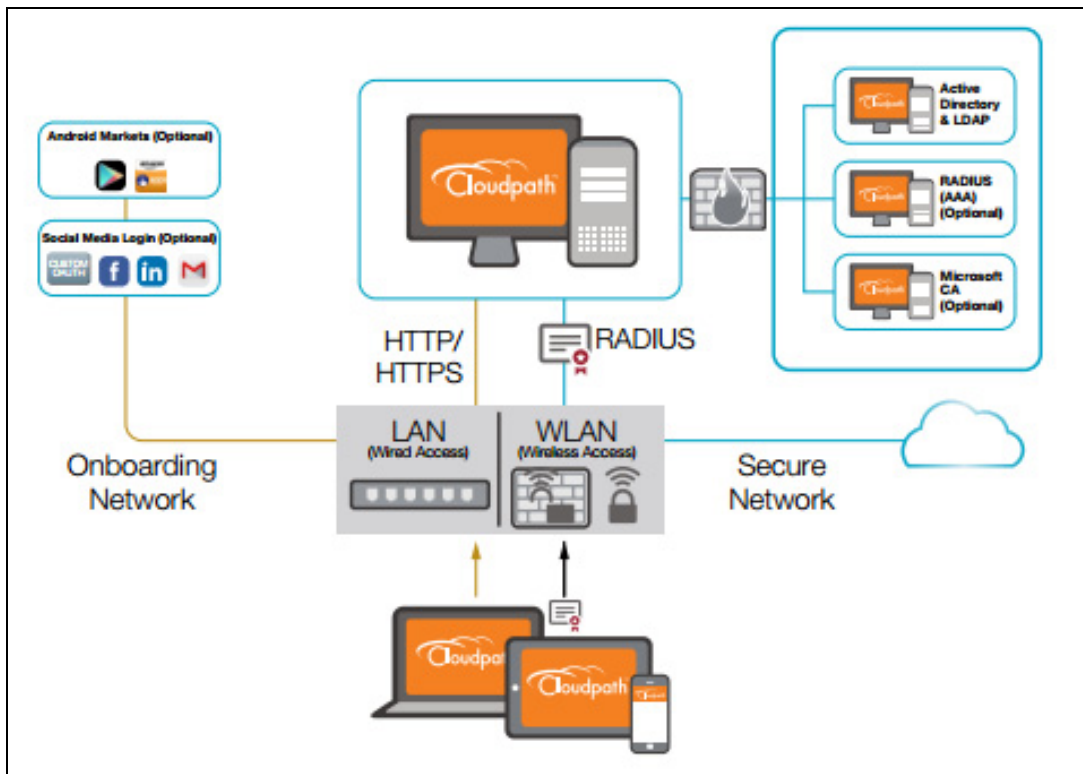
Cloudpath Security and Policy Management

Cloudpath Enrollment System (ES) software is a security and policy management platform that enables any IT organization to protect the network by easily and definitively securing users and their wired and wireless devices—while freeing those users and IT itself from the tyranny of passwords.

Cloudpath software lets IT do with one system what usually requires many, while easily and automatically integrating with existing access and network security infrastructure..

The flexible workflow engine gives network administrators further control by blending traditional policies (AD, RADIUS, and Microsoft CA) with additional policy capabilities (LinkedIn, Facebook, and Google Gmail). When you combine third-party authentication with traditional authorization methods, the social media provides additional identity information during the onboarding process to deliver automated, self-service access for all devices.

FIGURE 1. Cloudpath Security and Policy Management Platform



Setting Up the Facebook Application

Before configuring the Enrollment System for third-party authentication, you must set up the Facebook application.

What You Need

- Facebook login credentials
- Name and Namespace for your application
- Display Name for your application
- Domain and Website URL for your application

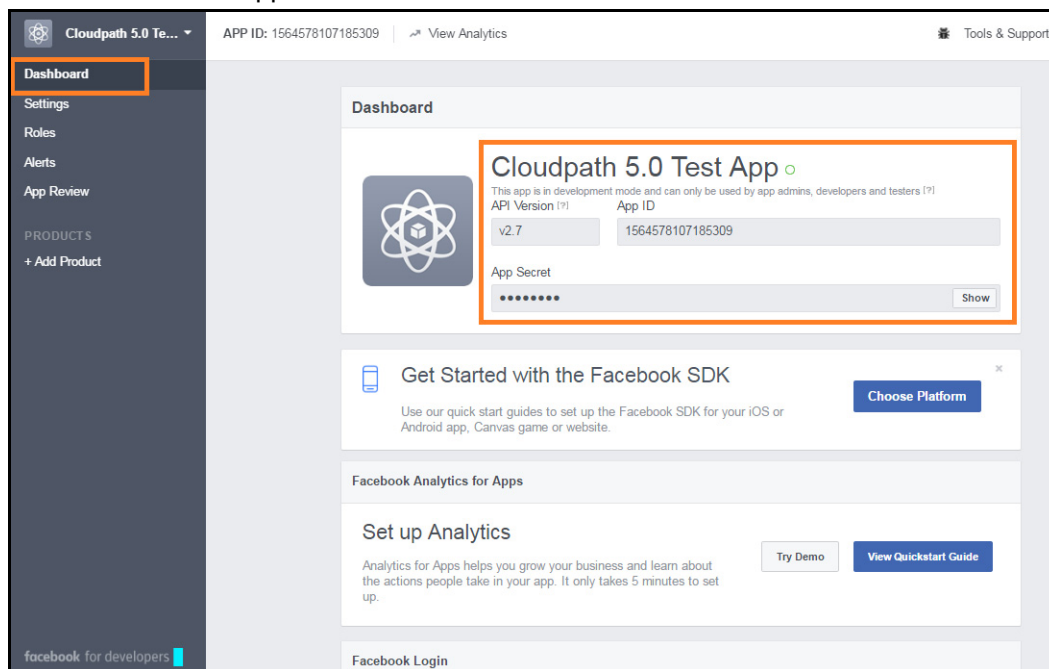
Facebook App Configuration

This section describes how to create the Facebook application to use with the Enrollment System.

Create the New App

1. Go to <http://developer.facebook.com>.
2. Log in using your Facebook credentials.
3. From the *My Apps* tab, select *Add a New App*.
4. On the *Add a New App* page, select *Website*. This automatically brings up the *Quick Start for Website* wizard.
5. Do not use the Quick Start Wizard. Instead, on the top right of the Quick Start, click *Skip and Create ID*.
6. Enter the *Display Name*, *Contact Email*, and select a *Category* for the app.
7. Click *Create App ID*.
8. Complete the Security Check.
9. Select the *Dashboard* tab, which displays the *App ID* and *App Secret*.

FIGURE 2. Facebook Apps Dashboard

**Tip >>**

Make note of your **App ID** and **App Secret**. You need this information to set up the Facebook authentication within the Enrollment System.

Configure Basic App Settings

1. Select the *Settings* tab.
2. Enter the Namespace, *App Domain(s)* and *Contact Email* for your application.
3. Click *Add Platform*.

FIGURE 3. Basic Settings

App ID
1564578107185309

App Secret
..... Show

Display Name
Cloudpath 5.0 Test App

Namespace

App Domains

Contact Email
eichel.anna@gmail.com

Privacy Policy URL
Privacy policy for Login dialog and App Details

Terms of Service URL
Terms of Service for Login dialog and App Details

App Icon
1024 x 1024

Category
Business

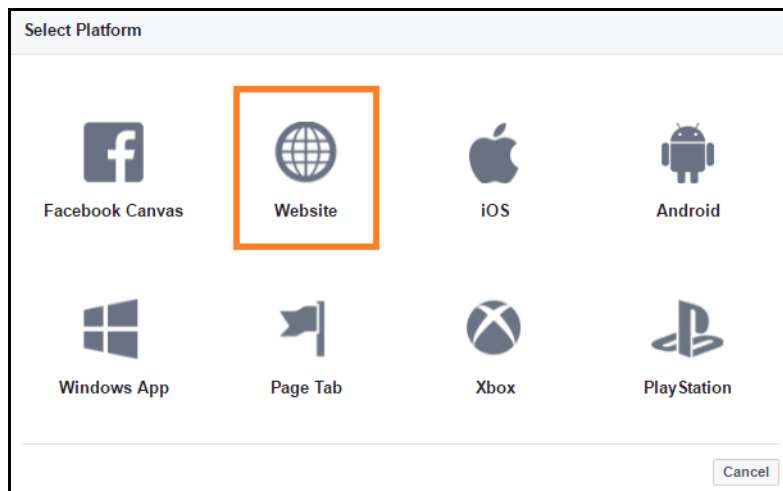
Website Quick Start X

Site URL
https://anna40.cloudpath.net/enroll/Anna40TestEVT/Production/facebook

+ Add Platform

4. On the *Select Platform* window, select *Website*.

FIGURE 4. Select Platform



5. Enter the *Site URL* for your site. The URL format should be similar to `https://test.company.com/enroll/Test/Production/facebook`

Note >>

The *Site URL* for your app is displayed on the OAuth Authentication server page, in the Facebook section. See the Cloudpath Configuration for details.

6. Click *Save Changes*.

Note >>

Your changes may take several minutes to propagate to all servers.

Valid OAuth Redirect URI

During testing, the Facebook application worked correctly for third-party authentication without the *Valid OAuth redirect URI* configured in the application, as long as the *Site URL* (see Step 4 above) was configured. However, the Facebook application shows an error if the *Valid OAuth redirect URI* is not configured for the Facebook app.

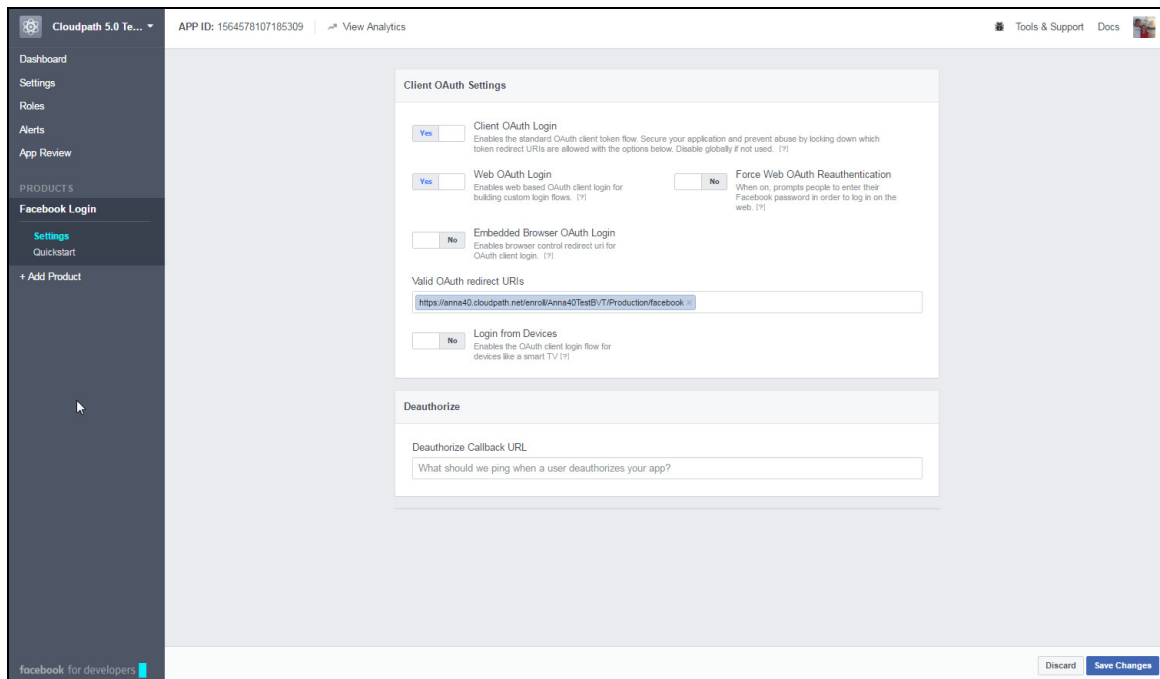
To add the Valid OAuth redirect URI:

1. Navigate to the *Products* tab, select *Facebook Login*, and *Settings*.

Note >>

If there is no *Facebook Login* tab, use the *Add Product* button to add it.

FIGURE 5. Facebook Login Tab



2. Enter the Valid OAuth redirect URI for the Facebook application.

The format should be similar to *https://test.company.com/enroll/Test/Production/facebook*. The *Valid OAuth redirect URI* for your app is displayed on the OAuth Authentication server page, in the Facebook section, and is the same value as was entered for the *Site URL*. See the Cloudpath Configuration for details.

Setting Up Cloudpath for Facebook Authentication

After the Facebook application is set up, you configure an authentication step in the Enrollment System to prompt the user for the Facebook credentials.

What You Need

- Facebook App ID
- Facebook App Secret
- (Optional) Scope parameters, Event ID, and Liked Page ID for your Facebook application

Cloudpath Configuration

This section describes how to add a step to the enrollment workflow to authenticate a user using a Facebook application.

How to Add Third-Party Authentication to the Workflow

1. Create an enrollment workflow for third-party authentication.
2. Add an enrollment step that prompts the user to authenticate through a third-party source.
3. Select *Create a new configuration*.

The *Third-Party Authentication Setup* page allows you to specify which third-party sources are allowed as well as API information related to those sources.

4. Enter the *Name* and *Description* of this configuration.

FIGURE 6. Enrollment System Third-Party Authentication Setup

Third-Party Authentication Setup
Cancel < Back Save

Reference Information

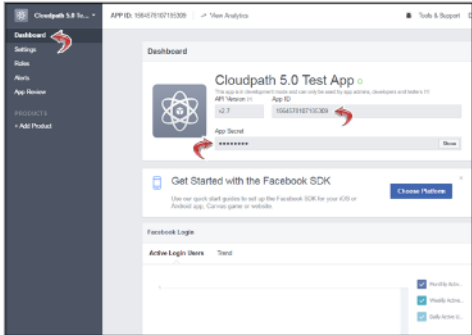
Name: *

Description:

Facebook Configuration

Facebook Supported?

Instructions: The Facebook Developer's Console is available at <https://developers.facebook.com>. Within My Apps, create a new app for a website, and Create App ID. You will need the App ID and App Secret.



App ID:

Secret:

Scope:

Event ID:

Liked Page ID:

Redirect URL: Facebook will need a Website "Site URL" to redirect to. This must be the full enrollment URL + "/facebook", such as <https://test71.cloudpath.net/enroll/Regression/Test/facebook>.

Based on the current deployment locations, the Site URL should be one of:
<https://anna40.cloudpath.net/enroll/Anna40TestBVT/Production/facebook>

Google Configuration

Google Supported?

LinkedIn Configuration

LinkedIn Supported?

Custom OAuth 2.0

Custom Oauth 2.0 Configuration

- In the Facebook Configuration section, check the *Facebook Supported?* box and complete the following fields:

- **App ID** - The *App ID* from the Facebook application you just created.

- **Secret** - The *App Secret* from the Facebook application you just created.
- **Optional settings:**

-**Scope** - A comma separated list of permission names that allows the application to read or write additional data (such as email or user_group) from the Facebook application. If scope is left blank, you can only obtain the *Facebook profile ID, URL, and Name*.

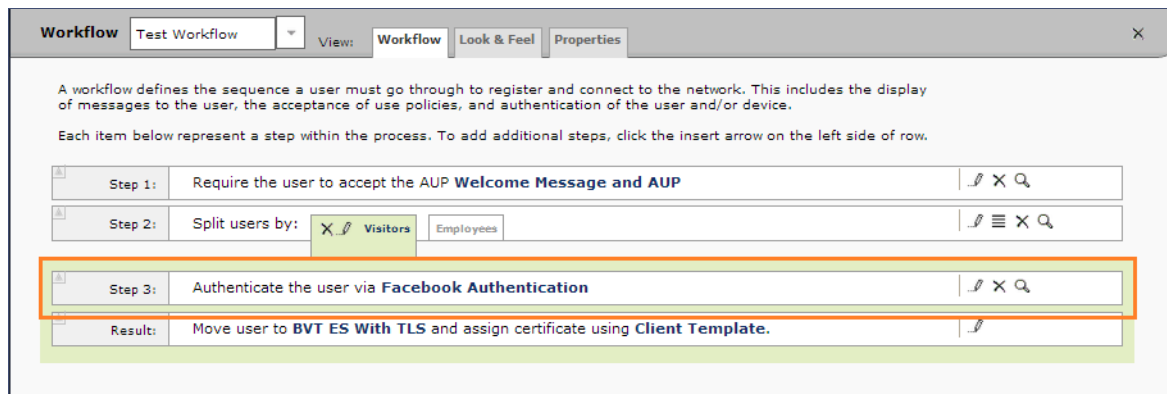
-**Event ID and Liked Page ID** - Allows the application to provide additional information about the user. The *Scope* must include *user_likes* to use *Liked Page ID*, and *user_events* to use *Event ID*. Adding a *user_event* (or *user_likes*) in the *Scope* allows you to create a filter in the workflow based on whether a user is in the *user_event* (or *user_likes*) group. See the Identity Information in the Enrollment Record to view the User Groups.

Tip >>

To obtain the *Event ID* or *Page ID*, right-click on the FB page or event and *View Page Source*, then search for the string *event_id* or *page_id*.

6. Click **Save**. The Facebook authentication step is added to your enrollment workflow.

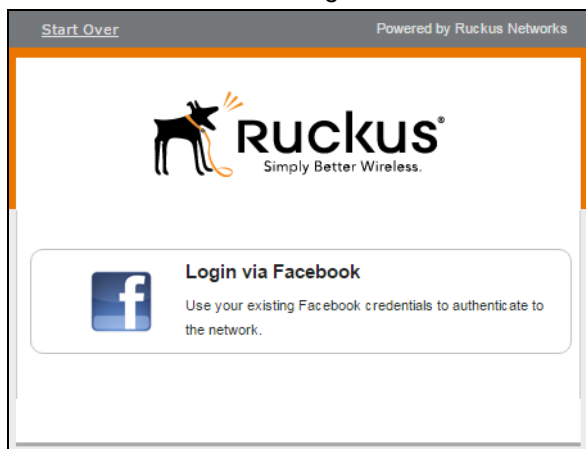
FIGURE 7. Enrollment System Workflow



User Experience

During the enrollment process, the user is prompted to authenticate using their Facebook credentials.

FIGURE 8. Authenticate Using Facebook



- If the user is logged into Facebook, the enrollment continues.
- If the user is not logged into Facebook, they are prompted to log in, and after a successful authentication, redirected back to Cloudpath to continue with the enrollment process.

Additional Documentation

You can find more information in the Cloudpath configuration guides, located on the left-menu *Support* tab of the Cloudpath Admin UI.